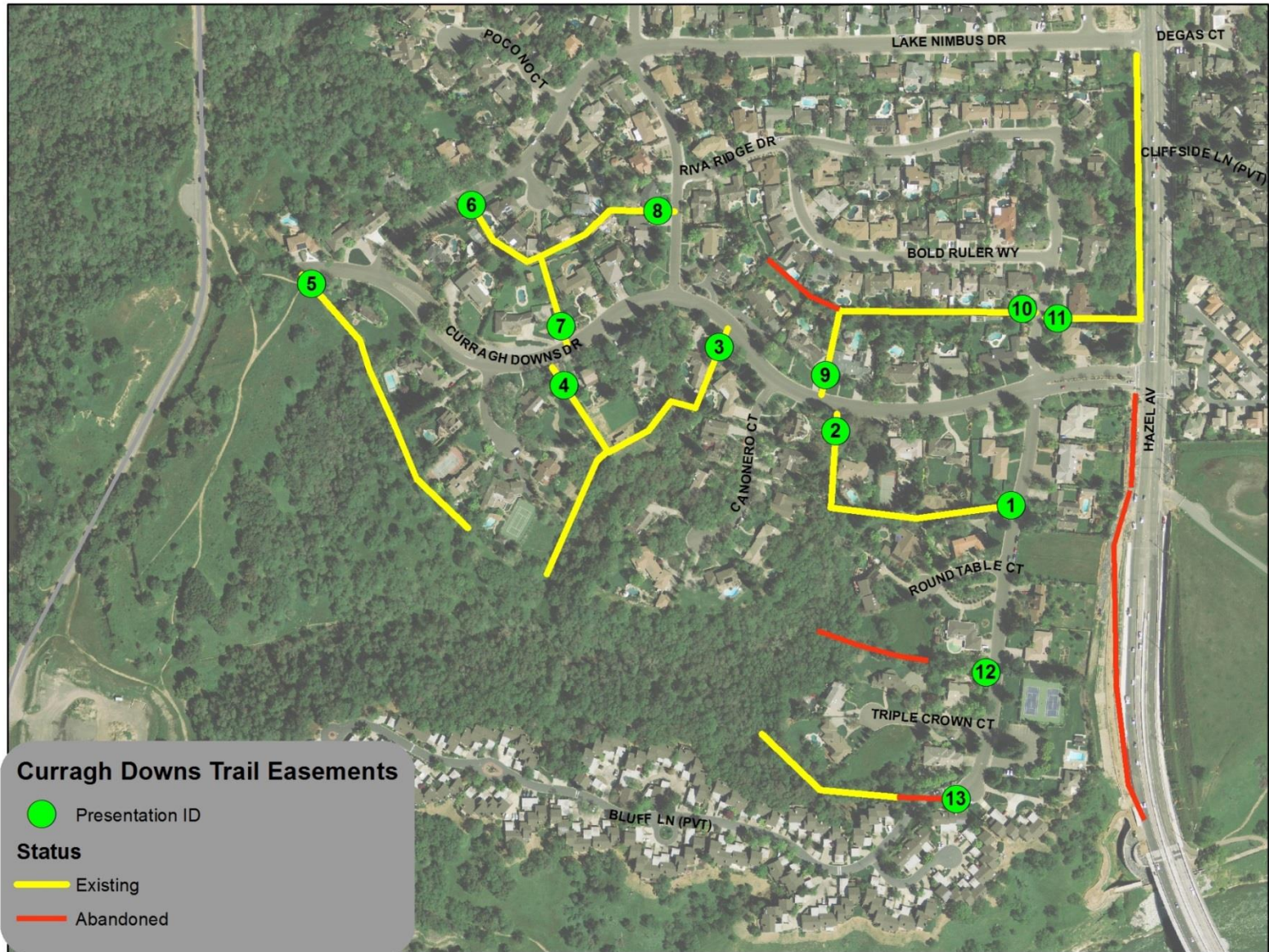


# Curragh Downs

Trail System and Recommendations

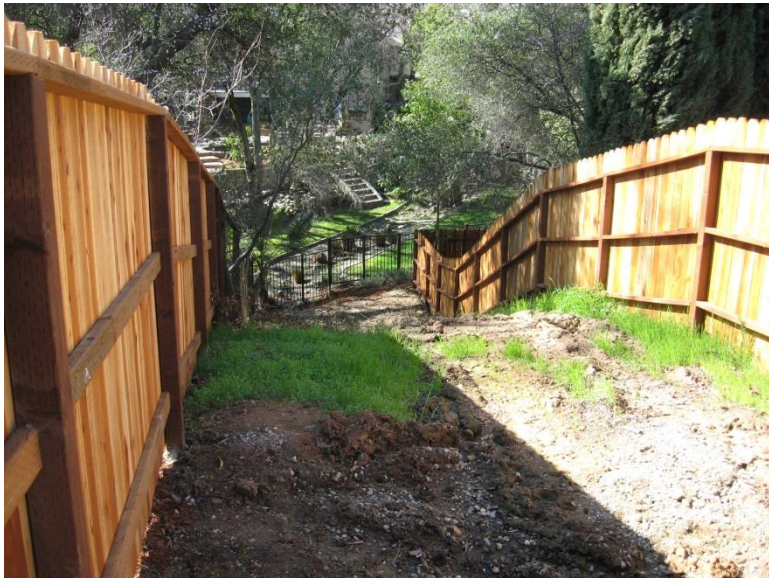
June 2014

# Curragh Downs Existing Trail Easements





# #1 Riva Ridge Drive and Roundtable Ct. (recently opened) Spray paint and brush pile





#2 Curragh Down's Drive and Canonero Ct east (recently opened) Spray paint and brush pile

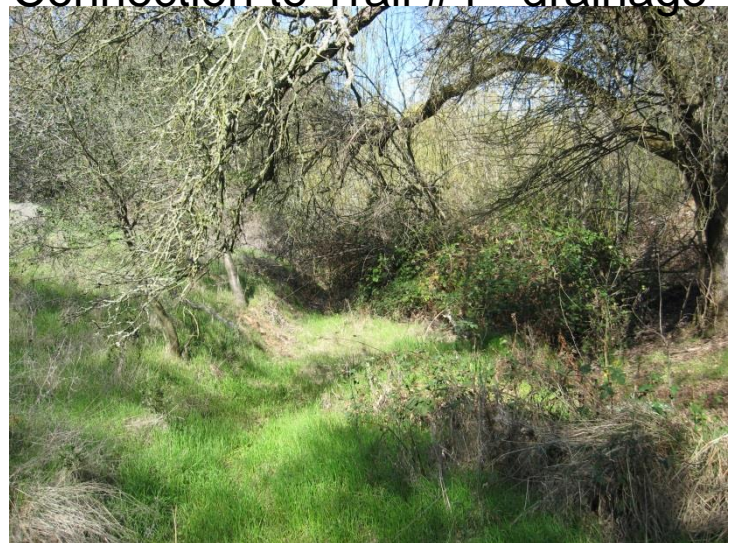




### #3 Curragh Down's Drive and Canonero Ct West (fenced) Spray paint on curb



### Connection to Trail #4 - drainage





#### #4 Curragh Down's Drive and Pretense Ct west (maintained trail to Parkway)





# #5 End of Curragh Down's Drive along border of Sailor Bar





#6 Lake Nimbus Drive interior (retaining wall and fence)





#7 Curragh Down's Drive and Pretense Ct interior (ends at fence)





#8 Thistledown Drive interior (ends at fence)





# 9 Curragh Down's Drive and Canonero Ct interior (ends at fence)





# #10 Riva Ridge Drive and Bold Ruler Way -interior (ends at fence)





# 11 Riva Ridge Drive and Bold Ruler Way to Hazel Ave (ends at newly built fence)  
This had been open when checked in 2009.





#12 Riva Ridge Drive and Triple Crown Ct (2009 photo of abandoned easement)





#13 Riva Ridge Drive and Triple Crown Ct (2009 photo of abandoned easement)





# Sacramento County Department of Regional Parks Recommendation June 2014

