

Slope Erosion Control Details

*9809 Mira Del Rio
Sacramento, California*

Sheet Index

1. Cover Sheet
2. General Notes
3. Location Maps
4. Typical Cross-Section and Elevation Detail
5. Self-Drilling SuperNail® Detail

This drawing is furnished solely for the use of or in connection with this project and the proprietary information shown hereon is not to be transmitted to any other organization without specific authorization by GeoStabilization International. (GSI). The design is only valid if constructed and supervised by GSI or its authorized subcontractor.

Sheet Revision		
Date:		By:
01-02-14	Revised Sheets 2, 4 and 5	JDP

Cover Sheet	
Project: 9809 Mira Del Rio	Drawn By: JDP
Date: January 2, 2014	Checked By:

Project No./Code: ---
Sheet No.: 1



GeoStabilization International
 1809 S Street Ste. 101-203
 Sacramento, CA 95811
 P: (916) 913-0748
 F: 970.245.7737
www.geostabilization.com

The intent of this temporary erosion control project is to prevent further weathering, slabbing and erosion of the top nominal 15 vertical feet of the existing bluff face. Based on the location and type of erosion that has been experienced at the project site, gabion baskets, grading or traditional retaining wall methods (cantilever, MSE, heavy concrete block) would require significant excavation and disruption to the bluff face and surrounding area. The least distributive and most esthetically pleasing technique currently available to halt bluff slabbing, weathering and erosion is soil nails and sculpted / stained shotcrete. This project is designed with soil nail anchors to secure the mesh to the bluff face.

The existing condition of the top of the bluff face, as noted in the River Bluff Area Engineering Geologic Study prepared by Youngdahl Consulting Group, Inc. dated December 2003, suggests that the bluff is composed of a cemented silt with fine sand (ML) or possibly silty sand with trace clay (SM). The report describes the slope stability of the bluff as follows; "The existing slopes of the project site were observed to have adequate vegetation on the slope face, appropriate drainage away from the slope face, and no apparent tension cracks or slump blocks in the slope face or at the head of the slope. Although the vertical standing portion of the slope at the top of the bluff north of the house area appears to have been stable for a considerable amount of time, it is probable that a gradient of 40 to 60 degrees (typical of Bluff Erosion Zone 4) is a more long-term stable condition." Due to the relative stability of the existing bluff, a structural slope stability analysis was not determined to be necessary and as such the soil nails and mesh shall not be considered a "retaining" structure but rather a temporary erosion control measure.

Construction Sequence/Work Schedule:

- The owner or its contractor will clear, excavate, haul off excavated material and provide access to the top of the proposed erosion control area.
- GSI will provide and install the specified soil nails and surface treatment per the construction documents.

Size and Spacing of Nails:

- GSI will mark the locations of the proposed soil nails with survey marking paint.
- The Soil Nails will be injected with grout. The grout will be a Type I,II,or III Portland Cement. The water/cement ratio will be 0.40 to 0.60. No additional aggregate or admixtures will be added to the grout.

Bearing Plate Placement:

- 8" x 8" x 3/8" Steel Bearing Plates will be placed over the nails and attached with a hex nut to the nail to secure the wire mesh to the soil surface. If the soil nails extend beyond the hex nuts, they will be trimmed using a gas powered demolition saw.

GSI Employee Certifications:

- ACI Shotcrete Nozzlemen Certification
- 10-hour Occupational Safety and Health Training Course in Construction Safety & Health
- American Red Cross Standard First Aid Training
- American Red Cross Bloodborne Pathogens Training: PDT
- Erosion Control Supervisor Training

House Keeping:

- The site will be organized and clear of any trash or debris. All trash will be placed in a proper container and removed at the end of each work day.

Safety:

- All safety plans for lifting, hearing, dust control, PPE etc. are in place and will be followed accordingly. PPE will include safety vest, steel toed shoes, hard hat, safety glasses, and gloves.

Grout Mix Design:

Water/Cement Ratio (0.5 - 0.6)

(Batch Weight Per Cubic Yard)

Material	Weight	Volume	
Cement	2061 lbs	10.6 Cubic Feet	21.9 bags (94#)
Water	1030.5 lbs	16.5 Cubic Feet	123.4 gallons
Total		1 Cubic Yard	

(Per 94# Bag of Cement)

Material	Weight	Volume	
Cement	94 lbs	0.48 Cubic Feet	1 bag (94#)
Water	47 lbs	0.75 Cubic Feet	5.6 gallons
Total Volume		1.23 Cubic Feet	

This drawing is furnished solely for the use of or in connection with this project and the proprietary information shown hereon is not to be transmitted to any other organization without specific authorization by GeoStabilization International. (GSI). The design is only valid if constructed and supervised by GSI or its authorized subcontractor.

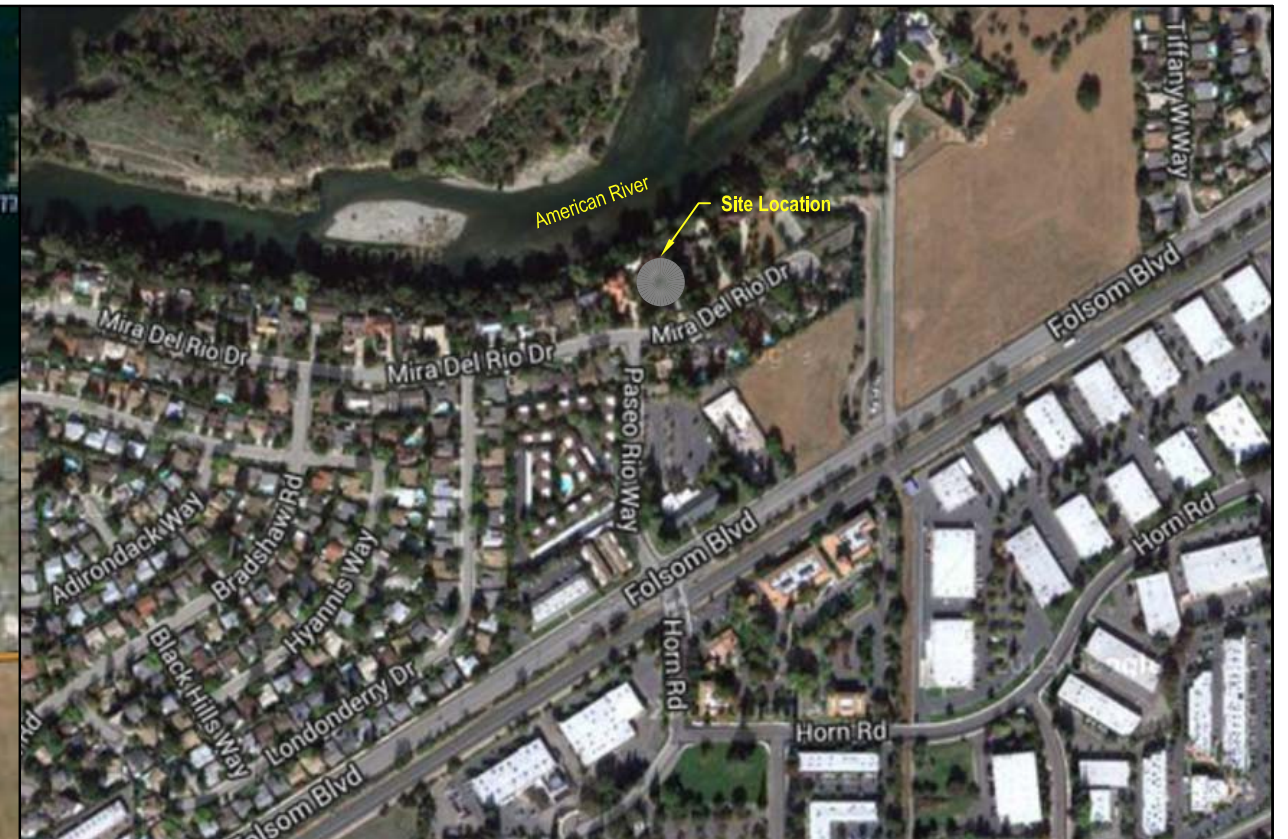
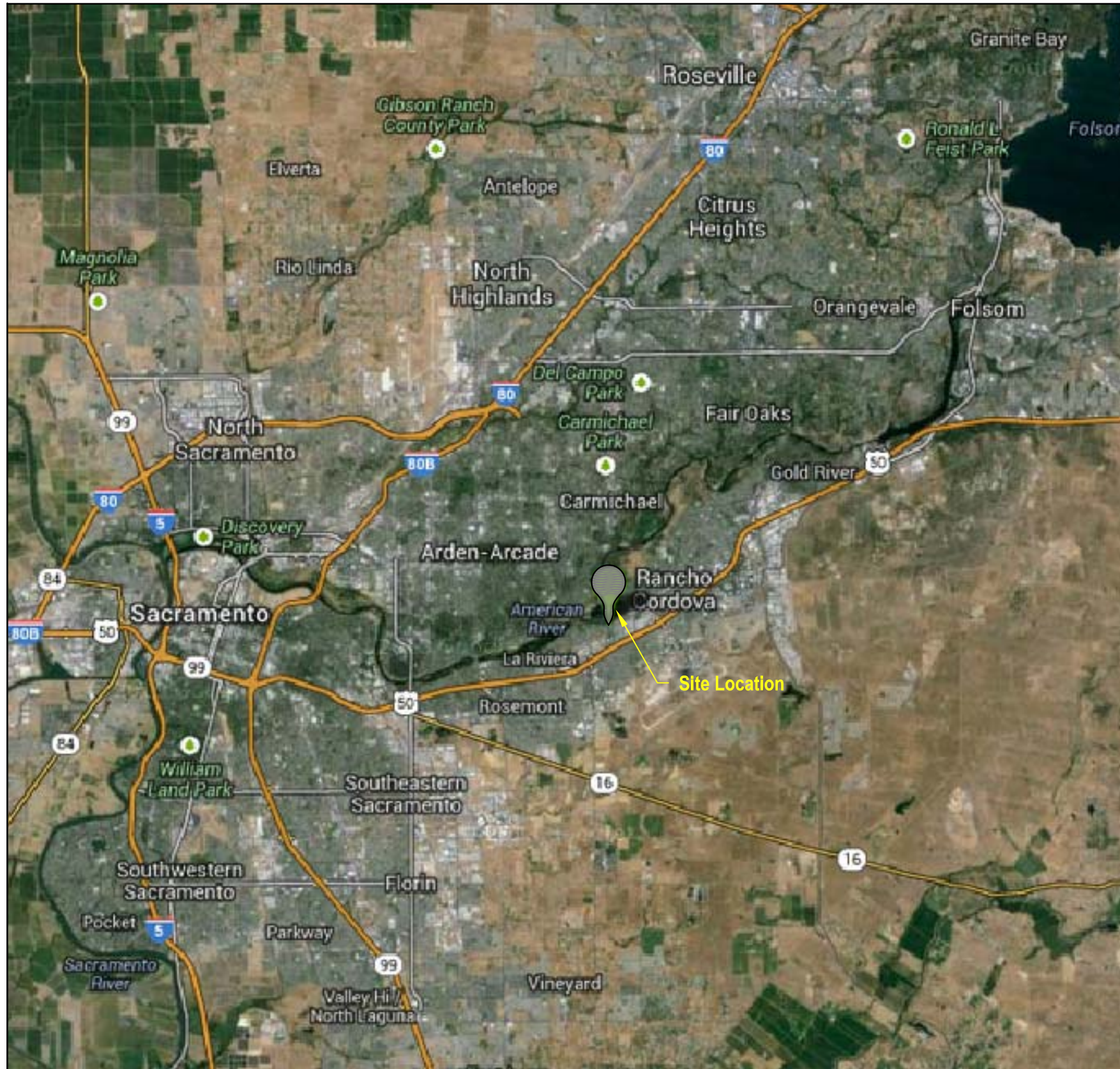
Sheet Revision		
Date:	By:	
01-02-14	JDP	Removed mention of Shotcrete

General Notes	
Project: 9809 Mira Del Rio	Drawn By: JDP
Date: January 2, 2014	Checked By:

Project No./Code: ---
Sheet No.: 2



GeoStabilization International
 1809 S Street Ste. 101-203
 Sacramento, CA 95811
 P: (916) 913-0748
 F: 970.245.7737
 www.geostabilization.com



This drawing is furnished solely for the use of or in connection with this project and the proprietary information shown hereon is not to be transmitted to any other organization without specific authorization by GeoStabilization International. (GSI). The design is only valid if constructed and supervised by GSI or its authorized subcontractor.

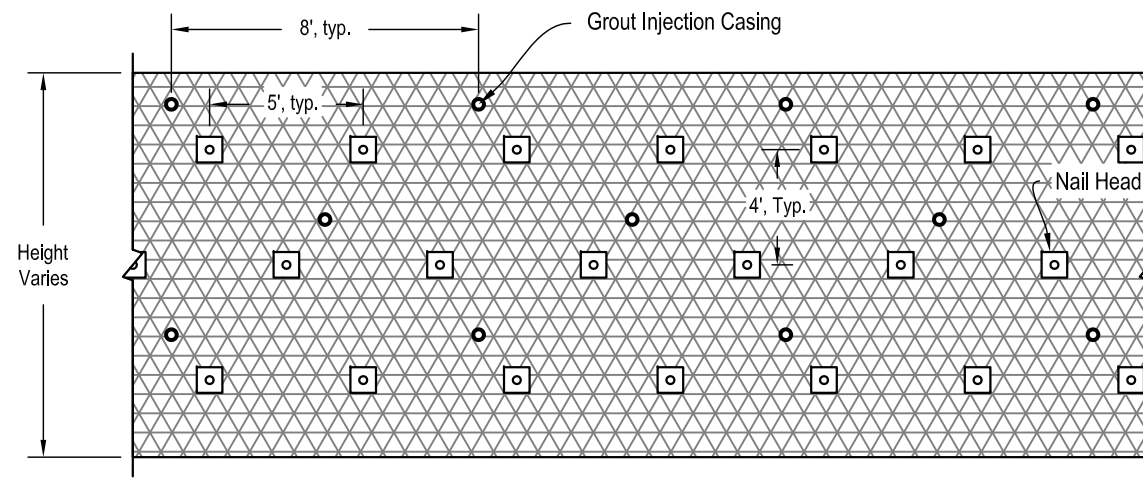
Sheet Revision	
Date:	By:

Location/Vicinity Maps	
Project:	Drawn By:
9809 Mira Del Rio	JDP
Date:	Checked By:
January 2, 2014	

Project No./Code:	---
Sheet No.:	3

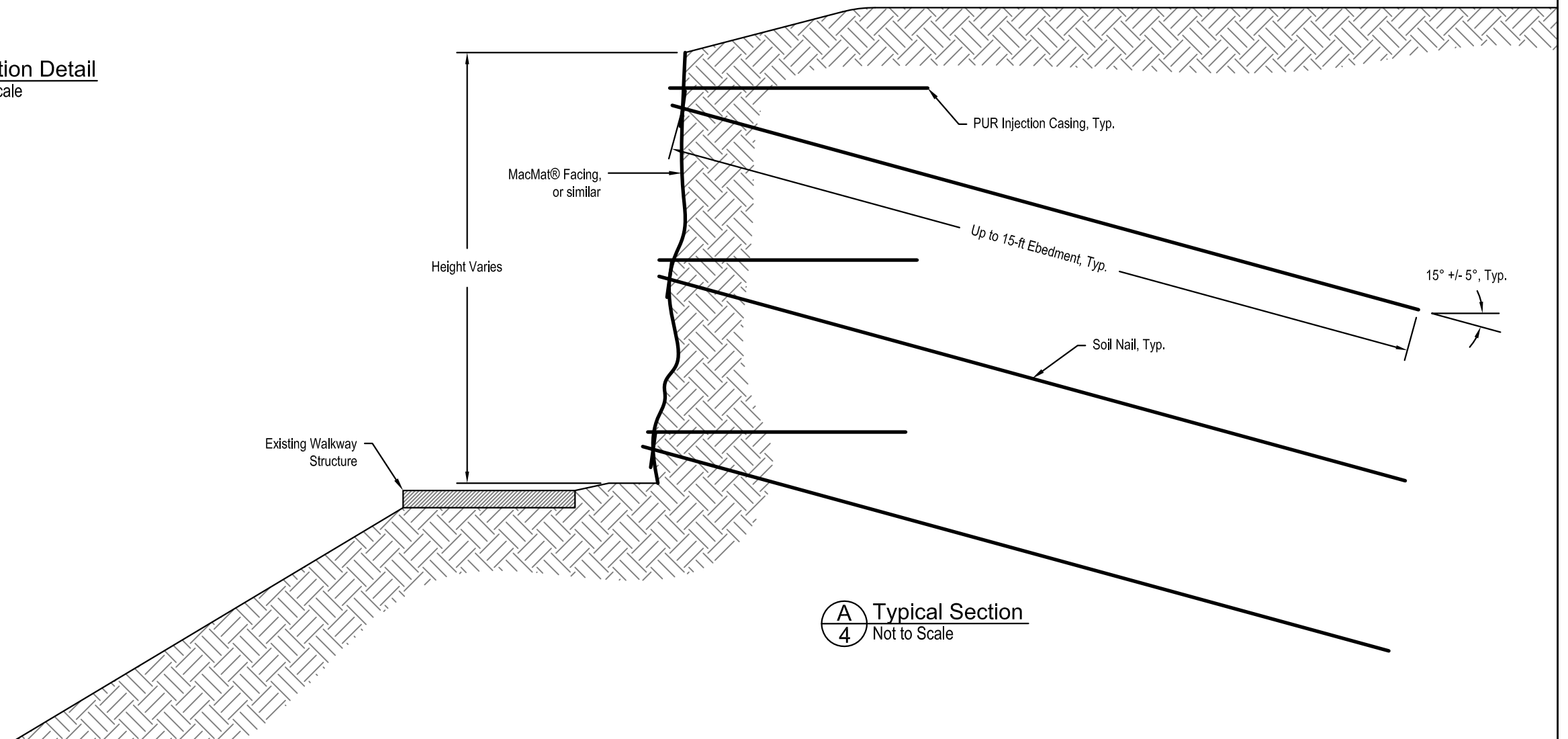


GeoStabilization International
 1809 S Street Ste. 101-203
 Sacramento, CA 95811
 P: (916) 913-0748
 F: 970.245.7737
 www.geostabilization.com



Note: 25 L.F. of Stabilization As Shown

B Elevation Detail
4 Not to Scale



A Typical Section
4 Not to Scale

This drawing is furnished solely for the use of or in connection with this project and the proprietary information shown hereon is not to be transmitted to any other organization without specific authorization by GeoStabilization International. (GSI). The design is only valid if constructed and supervised by GSI or its authorized subcontractor.

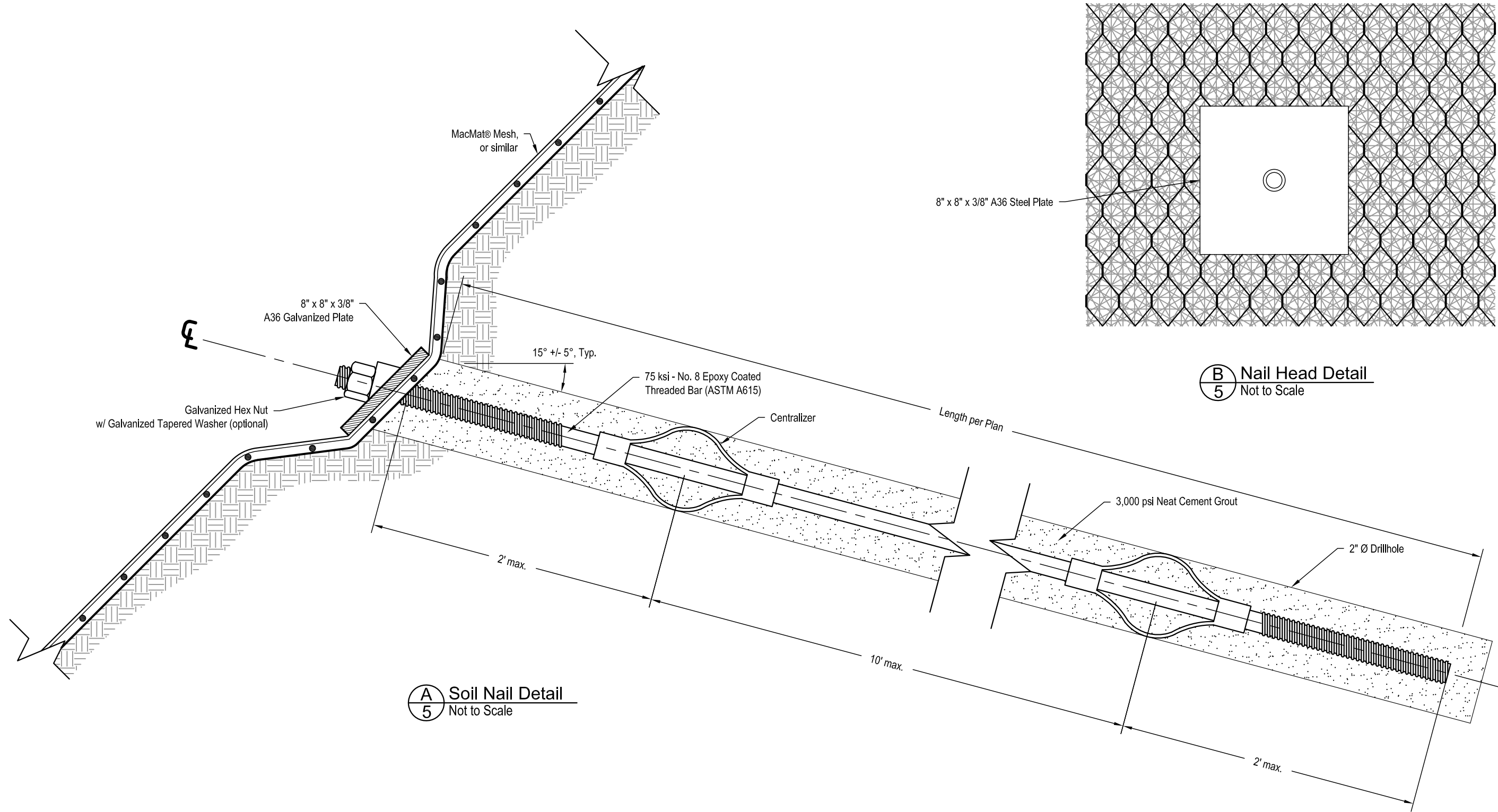
Sheet Revision		
Date:	By:	Revision
01-02-14	JDP	Replaced Shotcrete with MacMat Mesh

Typical Cross-Section & Elevation Detail	
Project: 9809 Mira Del Rio	Drawn By: JDP
Date: January 2, 2014	Checked By:

Project No./Code: ---
Sheet No.: 4



GeoStabilization International
 1809 S Street Ste. 101-203
 Sacramento, CA 95811
 P: (916) 913-0748
 F: 970.245.7737
 www.geostabilization.com



A Soil Nail Detail
5 Not to Scale

B Nail Head Detail
5 Not to Scale

This drawing is furnished solely for the use of or in connection with this project and the proprietary information shown hereon is not to be transmitted to any other organization without specific authorization by GeoStabilization International. (GSI). The design is only valid if constructed and supervised by GSI or its authorized subcontractor.

Sheet Revision		
Date:	By:	Revision
01-02-14	JDP	Replaced Shotcrete with MacMat Mesh

Soil Nail Detail	
Project:	9809 Mira Del Rio
Drawn By:	JDP
Date:	January 2, 2014
Checked By:	

Project No./Code:	---
Sheet No.:	5



GeoStabilization International
 1809 S Street Ste. 101-203
 Sacramento, CA 95811
 P: (916) 913-0748
 F: 970.245.7737
 www.geostabilization.com